

### CURVE TABLE

Curve	Radius	Tangent	Chord	Arc	Delta	Chord Bearing
1	83.83'	90.91'	123.26'	138.47'	94° 38' 08"	S18° 07' 42"E
2	2050.00'	29.94'	59.87'	59.87'	01° 40' 24"	S23° 43' 02"W

### LINE TABLE

Line	Bearing	Distance
1	N67° 07' 10"W	81.50'
2	N23° 54' 28"E	38.21'
3	N60° 48' 37"W	50.00'
4	N29° 11' 23"E	89.83'
5	S29° 11' 23"W	15.49'
6	S65° 26' 46"E	16.35'



Scale: 1" = 100'

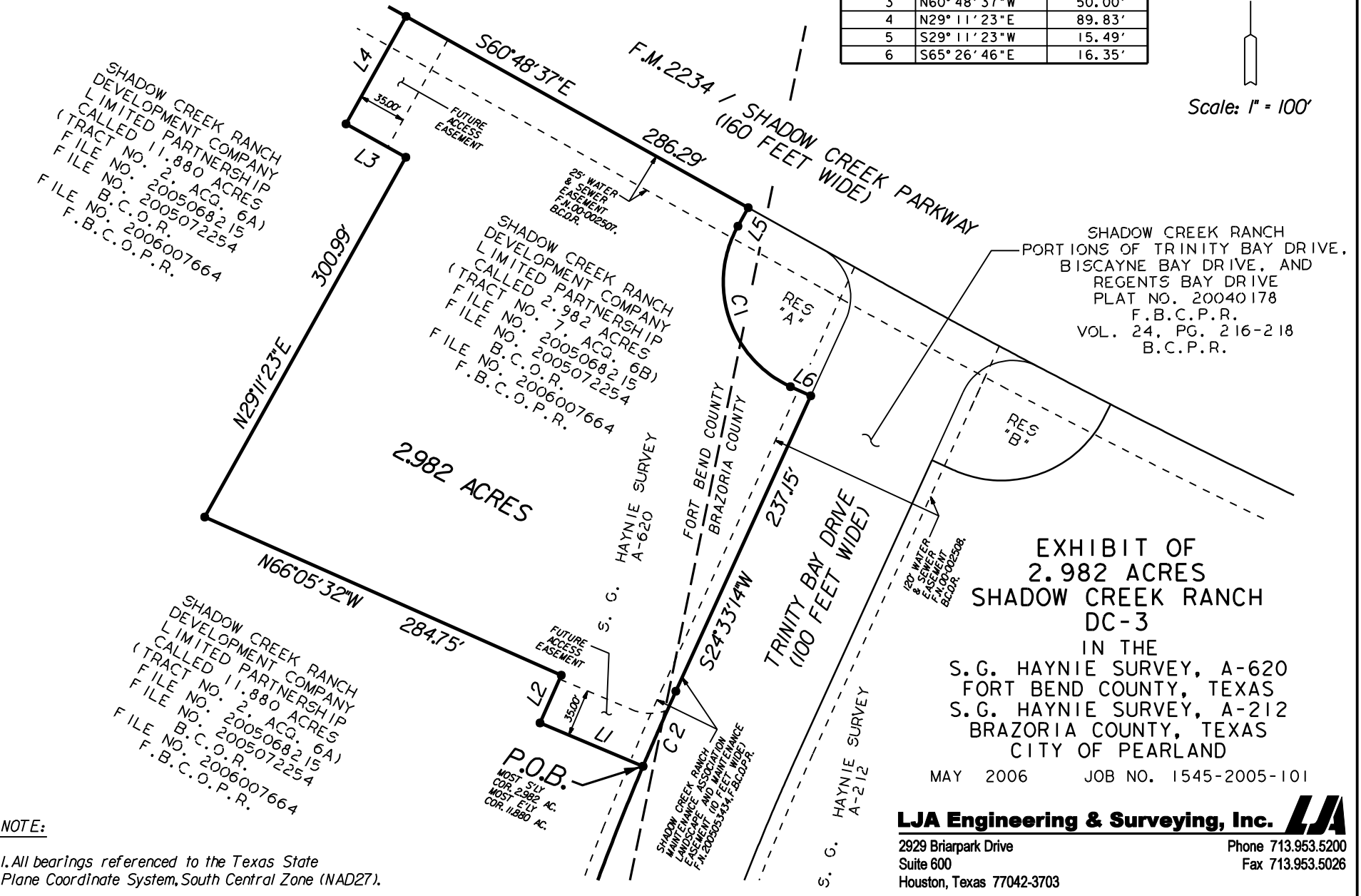


EXHIBIT OF  
2.982 ACRES  
SHADOW CREEK RANCH  
DC-3  
IN THE  
S.G. HAYNIE SURVEY, A-620  
FORT BEND COUNTY, TEXAS  
S.G. HAYNIE SURVEY, A-212  
BRAZORIA COUNTY, TEXAS  
CITY OF PEARLAND

MAY 2006 JOB NO. 1545-2005-101

**LJA Engineering & Surveying, Inc.**  
2929 Briarpark Drive  
Suite 600  
Houston, Texas 77042-3703  
Phone 713.953.5200  
Fax 713.953.5026

**NOTE:**

1. All bearings referenced to the Texas State Plane Coordinate System, South Central Zone (NAD27).